

# Immanuel News

March 2025



---

**Our Mission:** Immanuel Lutheran Church is a fellowship of believers committed to live and share God's love by serving our community and the world.

**Our Vision:** We gather as believers who seek to grow in faith through worship, education, and welcoming fellowship. We seek to share God's love with the community through word and deed. We extend Christ's love in service to our community and our world.

---

## *PRESIDENT'S MESSAGE FOR MARCH 2025*

Dear Fellow Disciples of Christ:

Here it is already March. As was shared with you at the Semi-annual Meeting, at the end of January, we sent out letters to other Wausau Churches requesting possible merger consideration. I am pleased to let you know that as of the end of February we have heard back from three of them. Churches that responded are St. John's of the Town of Maine, St. Andrew's in the Village of Rib Mountain, and First English of Wausau. Each of these churches is forming contact teams to start conversations about mergers. It looks like March is going to be a very busy month for our team and theirs. As we are moving forward in this process, I am asking all of you to keep praying for our church council and the process of merger.

The search for a realtor continues and could be decided early March. Last week I received a call about a possible purchase of our church by another church that

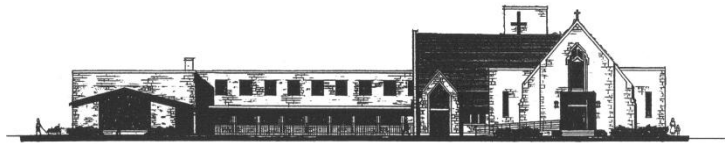
is looking for a larger space. I will be exploring this option early March to see where it goes. Please include this in your prayers also.

I am very hopeful that we will continue to see the end of the tunnel as God guides us into the next chapter of our church life. Always remember that “God is with us.”

*Yours in Christ,  
Bob Henning, President*

---

## **ILC History Hub IMMANUEL HISTORY**



The following description of Immanuel was written by me twenty years ago. I cannot remember the circumstances that prompted this account, but it seems to be an appropriate written memento of our congregation as it approaches its final months of existence. Al Solomonson

**A BRIEF HISTORY OF IMMANUEL LUTHERAN CHURCH  
WAUSAU, WISCONSIN  
SEPTEMBER, 2005**

Immanuel Lutheran congregation was founded by Norwegian immigrants in 1883. In the first 75 years it served primarily the Norwegian community in Wausau and was associated with the Norwegian Lutheran Church in America, later the Evangelical Lutheran Church (ELC). In 1960 it joined German and Danish Lutheran bodies to form the American Lutheran Church (ALC), now part of a larger denomination, the Evangelical Lutheran Church in America (ELCA). The congregation has since lost its Norwegian identity, although it celebrates its heritage through an autumn Norwegian Bazaar and the lefse making (a

Norwegian delicacy) that leads up to it. Today Immanuel's membership reflects the transient nature of the modern American family as a majority has moved from neighboring states and from other Wisconsin communities.

In its long history the congregation has worshipped in three different locations. Its current edifice was built in 1949 with additions constructed in 1959, 1968, and 1999. It has been served by 28 different pastors.

Immanuel has been noteworthy in its openness to new practices within Lutheranism. It was one of the first Lutheran congregations to extend the right of women to vote on congregational policy and to hold elected office, a practice that was in place at least by 1923. It has encouraged good relations with our Roman Catholic neighbors. In recent years the congregation has had joint choir concerts with the Catholic parish of St. Michael and has joined with its members in Palm Sunday marches, Thanksgiving worship services, and Vacation Bible Schools. In the late 1950s Immanuel and St. Matthew's Catholic Church participated in a two-year program of Ecumenical Living Room Dialogs. During this period the congregation committed itself also to youth leadership by encouraging teen age members to take part in congregational activities and responsibilities including service on committees, ushering, scripture reading, and even giving the sermon at Sunday worship. They have also served on call committees. For several decades it has allowed children in fifth grade to take part in the Lord's Supper. This communion practice has since been extended to younger children under certain conditions.

In recent years the parish has focused on becoming a congregation that is more closely knitted by encouraging small group get-togethers called "Folks and Food" and using lay members to visit those members who are no longer able to be active in worship and other activities. It also expects to pay off by the end of 2006 the debt incurred by the recent building addition and remodeling project and the construction of a new parking lot (*the debt has been paid off*). It already has established itself as one of the leading congregations in the synod for benevolence giving. These actions reflect Immanuel's recently adopted vision statement to nurture, serve, learn, tell, give, and grow.



**Immanuel Lutheran Church, 630 Adams Street,  
Wausau, WI 54403**

- **Easter Sunday, April 20, 2025** – Service at 10:30am.

**St. John Lutheran Church, 5304 44th Avenue  
Wausau, WI 54401**

- **Lenten Dinners at 5pm** (Every Wednesday in Lent – excluding Holy Week) March 5, 2025 – April 9, 2025
- **Lenten Services at 6:30pm** (Starting with Ash Wednesday March 5, 2025 – April 9, 2025)
- **Holy Week**
  - **Thursday, April 17, 2025, at 6:30pm** – Maundy Thursday Service
  - **Friday, April 18, 2025, at 6:30pm** – Good Friday Service
- **Easter Sunday, April 20, 2025** – Services at 8am and 10:30am, breakfast at 9:00 am.



**Time For Easter Flowers! The sign-up sheet is in the Narthex!**

Here are the flowers for 2025:

- Single Lilies (5+ blooms) \$13
- Spring Bulb Plants (Tulip, Daffodil, Hyacinth) \$10
- Mums – Daisy Variety in white, yellow or lavender \$14

*All prices include preformed foil pot covers.*

***Order by March 16, 2025***

**Mark Your Calendars!**

**AARP Volunteer Tax Aide Program.** The American Association of Retired Persons (AARP) Foundation & the IRS sponsor the Tax-Aide program. IRS tax law-certified volunteers will prepare federal, Wisconsin, & Homestead Credit

tax returns. The free service is open to anyone, with special consideration given to individuals w/low & moderate income & those aged 50 & over. If you live in Marathon County, please call (715) 298-5734 starting January 21, 2025, for additional information.

### **Food Pantry Donations**

**The Neighbors' Place welcomes donations for their food pantry. They are especially in need of toilet paper, shampoo, lotion, laundry soap, dish soap, juice, beef stew, mayo, cookies, canned fruit, and sugar.** If you would like to donate non-perishable foods or basic supplies, you may place them on the black cart next to the pew near the Gathering Room and they will be delivered to the Neighbors' Place.

**The Men's Discussion Group** meets on Thursdays at 7:30 am, in the Koinonia room. New participants are always welcome.

**Strong Bones Senior Exercise Group** meets every Tuesday and Thursday in the old Nursery at 10:30 am. The class is open to anyone wishing to improve balance and maintain strength to prevent falls. New faces are happily welcome.

### **Happy Birthday!**

The following individuals are celebrating their birthday in March! Jessica Case (03/01), Deborah Case (03/03), Kari Solomonson (03/04), Judi McGill (03/10), Andrew Kallio (03/12), Dan Zinsmeister (03/13), Judith Beckman (03/16), Don Dern (03/18), Nevin Smith (03/20), Barb West (03/21), Matthew Munson (03/28), Rick Lohr (03/31)

### **Happy Anniversary!**

Paul & Jane Reilly-Smith (3/6)

Our Sister Church is the Lobatla Parish. Pastor Elijah Lekwate. Email for Justice Pule: pulejustice74@gmail.com



**Thank you for your regular offerings.** Donations support our regular ministry and mission. This makes a difference in the lives of many who are touched by our ministry every day. Your gifts also are an expression of your faith and an offering of thanksgiving to God.

*There are several ways to make a gift:*

- ✓ Mail a check to 630 Adams St. Wausau, WI 54403.
- ✓ Place your offering in the offering plate before worship service.
- ✓ You can leave your offering in the safe box at the entry door of the church parking lot.
- ✓ Use your bank's online bill pay service to send a contribution - this is usually free, and you don't need to pay for postage.



**Immanuel Lutheran Church  
2024 Income vs Expenses**

Month	Income Received	Expenses Paid	Notes	Difference	Spec Funds income	Total Deposit
January	\$7,898	\$10,567		(\$2,668.97)	\$20.00	\$7,918.00
February				\$0.00		\$0.00
March				\$0.00		\$0.00
April				\$0.00		\$0.00
May				\$0.00		\$0.00
June				\$0.00		\$0.00
July				\$0.00		\$0.00
August				\$0.00		\$0.00
September				\$0.00		\$0.00
October				\$0.00		\$0.00
November				\$0.00		\$0.00
December				\$0.00		\$0.00
<b>Totals</b>	<b>\$7,898.00</b>	<b>\$10,566.97</b>		<b>(\$2,668.97)</b>	<b>\$20.00</b>	<b>\$7,918.00</b>

## **Immanuel Lutheran Church Council Meeting - December 15, 2024**

Members Present: Bob Henning – President, Karen Spoehr – Secretary, Patti Busche – Financial Secretary, Matt Munson – Treasurer, Kathy Knox - Social Concerns, Dan Westaby – Properties, Holly Westaby – Worship, Rick Lohr – Stewardship

Vice President – Position Open, Education - Position Open,

Guest – Bob Doede

Called to order: 9:00 am

Motion to suspend normal agenda. Motion made by Rick Lohr. Second by Patti Busche.

Presidents Report: Goals:

Find a Realtor: Cheryl Babl Group. Meet with Zion (in Wausau) for Head Start Program. Determine What size they are looking for. So far new are to small.

Exit Reality: Contact them about coming up with a proposal of sale or lease of the property.

Excel Engineering: Contact them to put together a package of what needs to be done to the property before sale or lease. They are from Oshkosh.

St John's Church: Will set a meeting for the possibility of a merger.

Bob stated that the churches we are planning to contact are: Pilgrim, Good Shepard, St. Stevens and St John's. for Transition or consolidation.

Rick said that stewardship tithes are down from last year. 2025 tentative is at \$84,026, that is approximately \$20k down. As for a church merge, Rick thought we should merge with a church that is not deep in debt and should have young people.

It was brought to a motion that we should write letters to churches to see if they want a merge. (Become part of them.) Need to list who we all send letters to, St. John's, 1<sup>st</sup> English, St. Andrews, Good Shepard, Pilgrim.

Need to make a chart of what each church has and wants. Rick 1<sup>st</sup>, Karen 2<sup>nd</sup>. Everyone was receptive to merger. I's have it. We intend to merge with one of the churches.

Bob will get a hold of the synod to see if they have a lawyer to help with transition/closing. We must merge to keep monies from the congregation. If not a merge than monies of the congregation revert to the synod.

Scholarship monies - will be addressed by Bob at the annual meeting.

Committee Reports:

Secretary - Council minutes from 11/19/2024. Change date on minutes to November 19, 2024. Minutes are up for approval. Rick 1<sup>st</sup>. Holly 2<sup>nd</sup>. I's have it. Motion carried.

Financial Secretary - (Blue Sheet) Offering Envelopes = \$20,115.70.

Special Funds total of \$1,520.00. Grand Total of \$21,792.70 taken in. Motion to approve made by Rick 1<sup>st</sup>, Matt 2<sup>nd</sup>. Motion carried.

Treasurer Report: (Purple/Pink Report) Income to general fund through 11/30/2024 is \$135,239.64. Expenses were = \$82,355.38. Net gain of: \$51,884.26. Monthly totals are net gain of \$11,877.96. With income of \$20,272.90 and expenses of \$8,394.74. Motion to approve made by Rick 2<sup>nd</sup> by Patti. Motion carried.

Budget review and approval had exceptions. An email was received from Jackie, about Larry who has been doing shoveling. Larry is in poor health and unable to shovel. Holly said that she would ask Maggie's husband, Keenan, if he would be able to do the shoveling. Motion was made to hire Keenan to do sidewalks. Rick 1<sup>st</sup>, Patti 2<sup>nd</sup>. Motion Carried.

Rate increase for bookkeeping of 2.5% would be an annual change of \$3,980 in 2024 to \$4,080 in 2025. Motion to accept budge increase for bookkeeping made by Patti and 2<sup>nd</sup> by Dan W. Motion Carried.

Budget Changes: Yearly contract for Johnson Controls (Fire Protection) Contract runs January thru December 2025 for 1,545.30.

Invoice #24462760. Pledges changed from 2025 budget: 95,000 to 86,000.

Under Benevolences: GWCS was zeroed out. Under Staff Wages: Worship Leader was changed to \$10,000.

Outside Custodian was changed to \$4,000.

Motion was made by Rick to approve Budget with adjustments made. Patti 2<sup>nd</sup>. Motion Carried.

Church Seasonal Offering Funds: Christmas Gift Donations to:

Salvation Army \$250.00

Neighbors Place \$250.00

Motion to accept donations as stated. Rick 1<sup>st</sup>, Patti 2<sup>nd</sup>. Motion Carried. Motion to adjourn at 10:20 am.

Closed with the Lord’s Prayer.

Next Meeting Sunday January 19, 2025

Respectfully Submitted

Karen Spoehr, Secretary

**Sunday, March 9, 2025, at 9:15am.** Immanuel Lutheran Church Congregational Informational Meeting.

**Sunday, March 23, 2025, am 9:15am.** Immanuel Lutheran Church Council Meeting.

## Serving us in March 2025

**Kathy Robinson, Pastor Richard Block, Deacon Everett Schmidt**

March 2025 Worship Servers					
Worship Leader					
DATE	PIANIST / ORGANIST	READER	USHER / GREETERS	VIDEO TAPER	COMMUNION
3/2/2025	Delores Kessel	Al Solomonson	Bruce Knox	Bob Henning	
3/9/2025	Karen Zuidema	Adam Doede	Bob Doede	Bob Henning	
3/16/2025	Delores Kessel	Vern Diestelhorst	Kathy and Bruce Knox	Bob Henning	
3/23/2025	Karen Zuidema	Sue Schwede	Mike Schwede	Bob Henning	
3/30/2025	Karen Zuidema	Sue Schwede	Mike Schwede	Bob Henning	
<b>Altar Guild: Kathy Knox, Joanne Distelhorst, and Pattie Bricko</b>					



*Psalm 71:9 "Do not cast me off in the time of old"*

**Facility**

**Riverview Towers, 500**  
Grand Ave., Wausau,  
WI 54403

▶ **Jeff Groethe**

**Forest Park Village,**  
2901 N. 7<sup>th</sup>  
Street#W503  
Wausau, WI  
(715) 675-3986

▶ **Joan Bonstead**

**Rennes Health &  
Rehab Center -  
Weston**

4810 Barbican Ave,  
#601  
Weston, WI 54476  
(715) 393-0400

▶ **Mrs. Leora Mitchell**

**Rennes Health &  
Rehab Center -  
Weston**

▶ **Mrs. Mary Anne  
Klinker**  
4602 Barbican Ave,  
#112  
Weston, WI 54476  
(715) 573-0715

**Bell Tower Residence,**  
1500 O'Day St, Merrill,  
WI 54452 (715) 359-  
0197

▶ **Carol Hettinga, Rm**  
307

**Mt. View Care Center  
of Wausau, 2400**  
Marshall Street,  
Wausau, WI 54403

**715-848-4300**

**Judy Blanchfield,**  
#4007

**Primrose Retirement  
Community**

2100 Townline Rd,  
Wausau, WI 54403:

▶ **Thelma Bursik, Apt**  
#101  
(715) 297-1785

▶ **Faye Schwarm Apt**  
#133  
(715) 842-7553

**Home**

▶ **Ann Kurth**  
2806 Polzer Drive  
Wausau, WI 54401  
(715) 298-1942

▶ **Jeanette Petterson**  
605 Eagle Nest Blvd.  
Apt. 208  
Rothschild, WI 54474  
(715) 359-0449

▶ **Carolyn Viergutz**  
Fairway Knoll  
N112 W17500 Mequon  
Rd  
Germantown, WI 53022

☞ Here are our church friends who are not able to come to church as often as they would like. They would love to hear from you or receive cards in the mail. Please call the church office if

## **A Message from Shauna Robinson:**

We partnered with Good Shepherd for Community on Call the week of February 9, 2025, through February 15, 2025. We were activated six of those seven days. It was a great experience; we were blessed to help between 10-15 people each night. We had some of the guests tell us that they wish we would do it more because we treat them like humans with feelings. We had volunteers help with many tasks from cooking, cleaning, bathroom checks, tote room, cot room, etc. Many hands made light work. Thanks to everyone who helped with either covering a meal, a volunteer shift or a monetary donation.

The Homeless Hygiene Drive kicked off on February 23, 2025, and will run through March 16, 2025. Donations collected here stay here in Marathon Co. at four local organizations. The four organizations are Community Center for Hope, Granite House, The Open Door and The Neighbors Place. This Hygiene Drive will be collecting new, unused hygiene and cleaning supplies and dropping them off at the boxes located at participating locations. St. Stephens, Good Shepherd, Immanuel Lutheran Church and Pilgrim Lutheran Churches are all collection sites. Any cleaning supplies are greatly appreciated such as bleach, toilet bowl cleaner, Windex, soap, Floor Cleaner, etc. If you'd prefer to do a monetary donation please contact Shauna Robinson. The current most urgent needs for our community include:

- Baby Hygiene Products such as Baby Wash, Baby Lotion, Diaper Cream
- Soaps: laundry soap, dish soap, body soap, shower gel, 2-in-1 shampoo or shampoo and conditioner individually
- Trash bags
- Deodorant
- Lotions
- Wet wipes
- Toilet paper
- Paper towels
- Disposable razors (smaller packs as they cant be opened and distributed)
- Tampons and maxi pads

Thank you to the four congregations for helping the Wausau Police Department cover the cost of a security deposit to get an unhoused individual into permanent housing. We were able to get her into housing that fit her family's needs.

We now have a Community Outreach Fund started at St. Stephens to help with larger items such as security deposits in the future if you're interested in donating, it would be greatly appreciated and it goes right back into the community. If you have any questions feel free to contact Shauna Robinson.

I have attached the "40 Days of Giving for Lent" as well. If you would like to collect I will come over at the end of Lent probably right after Easter and sort so we can distribute to those in need. The other congregations are doing this as well and it doesn't have to be exact but it's a guide for those looking to do something in Lent.

If you have any questions feel free to call Shauna Robinson, (608) 514-4504

### **40 Days 40 Items**

In observance of the Lenten Season, many people choose to "give up" something they enjoy as they enter a period of reflection. An alternative to or perhaps in addition to this observance is to "take on" something new.

You can collect an item for each day of Lent—40 days yields 40 much-needed items in our community for many organizations. You will make a profound impact on your community while you are reflecting on your life and making personal changes.

Please consider contributing the following shelf stable food to your local food bank, clothing or hygiene items to those that need it. You can bring these items to church and place them in the appropriate donation location, and we will sort and distribute at the end. Items collected will then be distributed amongst Neighbors Place, The Marty Bus, Women's Community and Community Clothing Closet.

1. Peanut Butter
2. Socks
3. Canned Meal with Pop Tops
4. Canned Chicken/Tuna

- |   |                                       |
|---|---------------------------------------|
| 5. Pasta                                | 6. Spaghetti Sauce                    |
| 7. Cereal                               | 8. T-Shirts                           |
| 9. Canned Vegetables                    | 10. Canned Fruit                      |
| 11. Oatmeal                             | 12. Applesauce                        |
| 13. Pants                               | 14. Spices/Sauces                     |
| 15. Jelly                               | 16. Juice/Juice Boxes                 |
| 17. Flour, Sugar or Oil                 | 18. Sweatshirts                       |
| 19. Side Dishes                         | 20. Soup                              |
| 21. Popcorn/ Snacks                     | 22. Hamburger Helper                  |
| 23. New Tarps                           | 24. Baked Beans                       |
| 25. Granola Bars/Protein Bars/Pop Tarts | 26. Water                             |
| 27. Laundry Soap                        | 28. Toilet Paper                      |
| 29. New Underwear/Boxers                | 30. Instant Mashed Potatoes           |
| 31. Microwave Meals                     | 32. Crackers [i.e. Saltine or "Ritz"] |
| 33. Cake Mix with Frosting              | 34. Walking Shoes without holes       |
| 35. Individual Drink Mixes ex. Propel   | 36. Tooth brush/Toothpaste            |
| 37. Paper Towel                         | 38. Bath Soap                         |
| 39. Shampoo/Conditioner                 | 40. Deodorant                         |

Please bring your donations to any of the four church locations listed below:  
St. Stephens, Good Shepherd, Pilgrim, or Immanuel Lutheran Church.

If you have questions feel free to reach out to Shauna Robinson, 608-514-4504,  
nutband@gmail.com